

Merging IPLAN and County Comprehensive Planning: Fulfilling Mandates While Achieving Measurable Results

Amanda Mehl

Hilary Rottmann

Lynden Schuyler



8/31/2018

1



Public Health
Prevent. Promote. Protect.

**Boone County
Health Department**

Today's Presentation

- Redefining the fields of Public Health and Planning
- MAPP/CP Basics
- IPLAN/CP Collaboration History
- Boone County IPLAN/CP Process and Timeline
- Collaboration
- Lessons Learned
- Future Steps



8/31/2018



Public Health
Prevent. Promote. Protect.

**Boone County
Health Department**

The **BUILD** Health Challenge

Puts multi-sector community partnerships at the foundation of improving health for everyone

Data Sharing Within Cross-Sector Collaborations

“Much of our health is influenced by social and environmental factors, such as employment opportunities, air and water quality, transportation, and educational attainment. Key to addressing these upstream factors—and ultimately improving community health—is better understanding of the complex interplay between them and our communities. To do so, we must collect, share, and successfully manage data across sectors”



8/31/2018



Public Health
Prevent. Promote. Protect.

**Boone County
Health Department**

Redefining Public Health

- **Public Health 3.0:** A call to action for Public Health to meet the challenges of the 21st century by embracing a broadened public health practice that goes beyond traditional public department functions and programs
- Focus on engaging multiple sectors and community partners for collective impact and improve the social determinants of health
- **Robert Wood Johnson Foundation Culture of Health:** broadly defined as one in which good health and well-being flourish across geographic, demographic, and social sectors
- Healthy equitable communities guide public and private decision making
- Everyone has the opportunity to make choices that lead to healthy lifestyles



8/31/2018

4



The American Planning Association fostering Health in All Policies

- At the same time 3.0 is being introduced, the American Planning Association (APA) encourages planners to embrace health in all policies
- The (APA) envisions a substantial shift in how planners understand and approach issues of health and equity in the comprehensive planning process
- The current Comprehensive Plan Standards are a framework that identifies six key principles:
 - Livable Built Environment
 - Harmony with Nature
 - Resilient Economy
 - Interwoven Equity
 - Healthy Community, and
 - Responsible Regionalism
- The Standards also identify two key processes
 - Authentic Participation
 - Accountable Implementation



8/31/2018

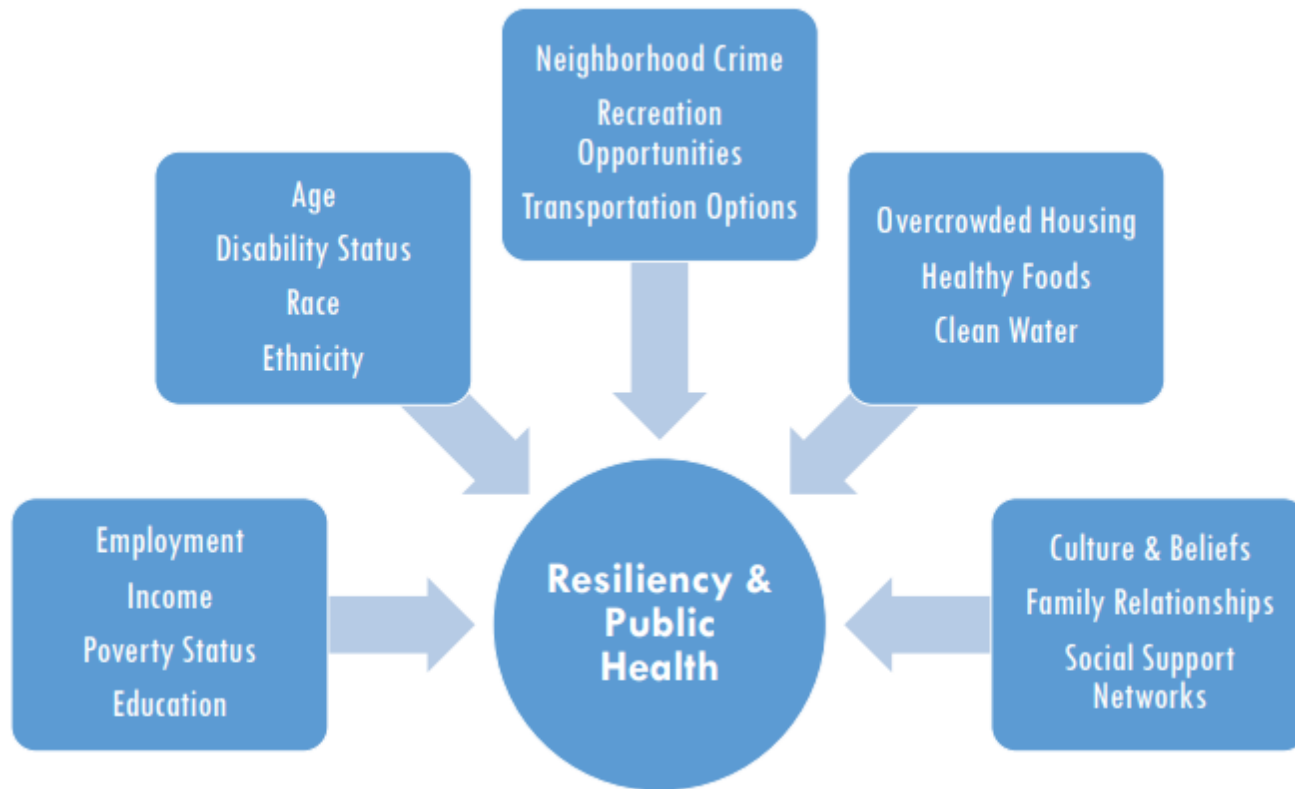
5



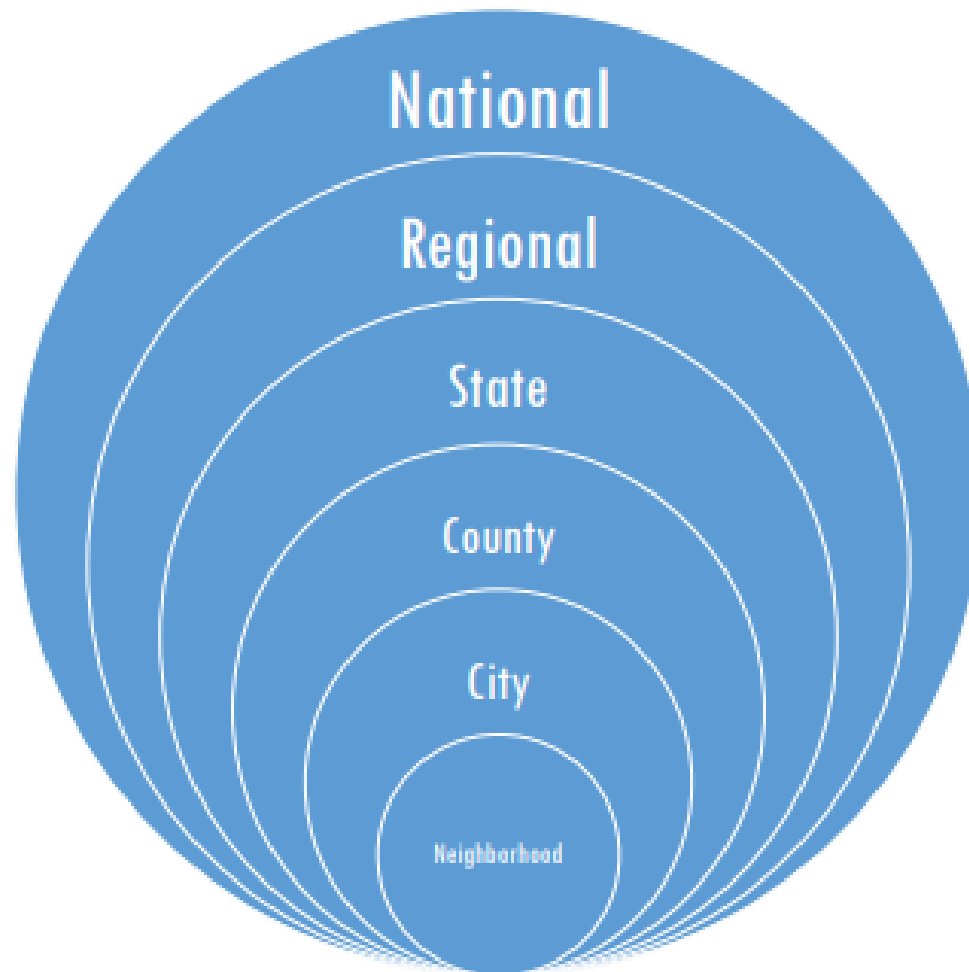
Public Health
Prevent. Promote. Protect.

**Boone County
Health Department**

We are used to talking about the social and structural determinants of health



The APA is reminding us that there is also a Spatial Determinant of health



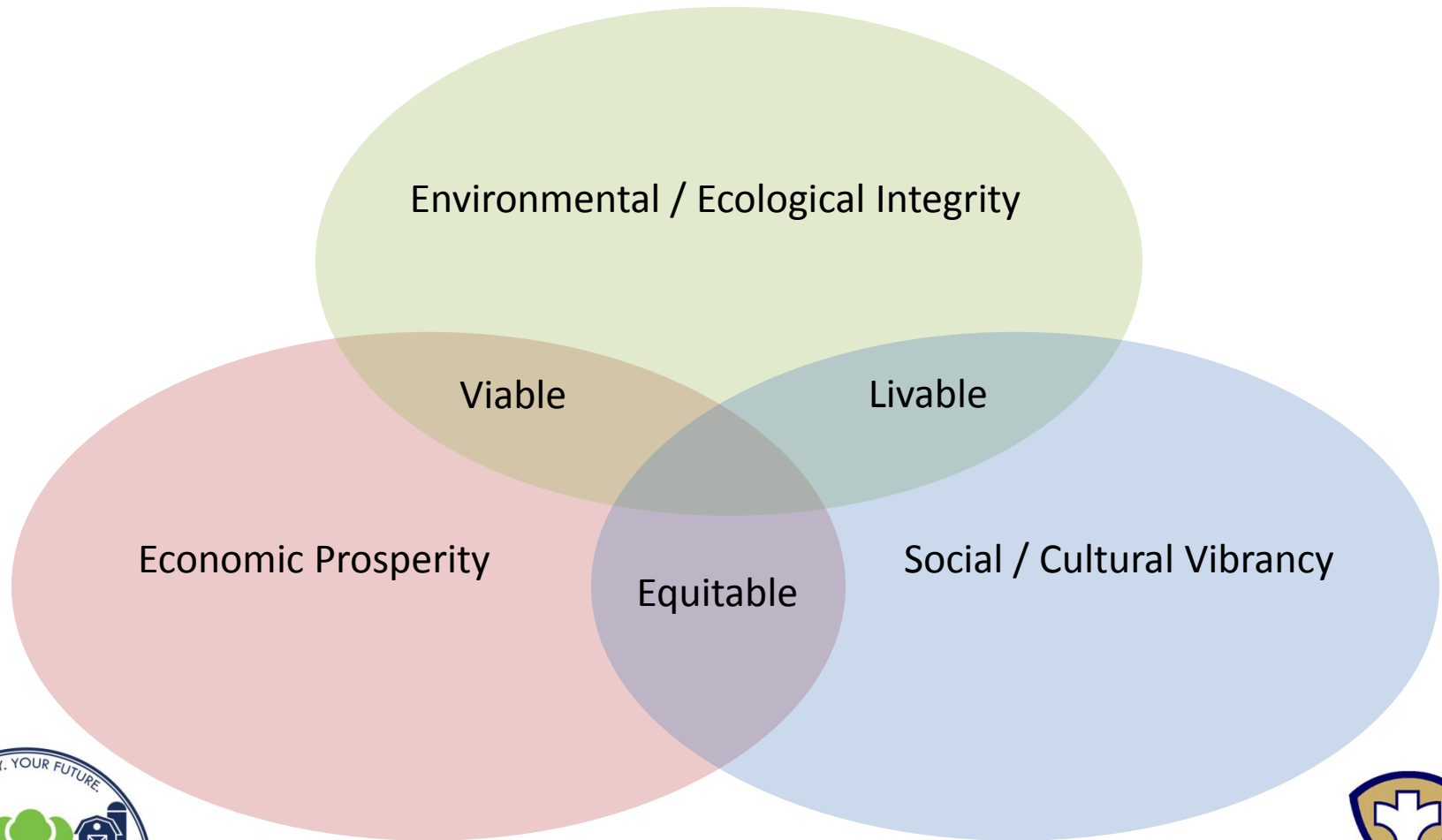
8/31/2018



Public Health
Prevent. Promote. Protect.

Boone County
Health Department

HIAP, PH 3.0, Culture of Health encompass overlapping principals



MAPP

- Mobilizing for Action through Planning and Partnership is a community-wide strategic planning process for improving public health
- Through processes that include outreach, surveys and forums with strategic partners, the communities are able to prioritize public health issues, identify resources for addressing them, and take action
- The four assessments of the MAPP process are designed to answer questions such as:
 - ✓ “What is important to our community?”
 - ✓ “How is quality of life perceived in our community?”
 - ✓ “What assets do we have that can be used to improve community health?”
 - ✓ BCHD began exploring this process in March 2017, studying the assessments of other counties throughout the country
- Without a budget for IPLAN, BCHD is dependent on its collaborative partnerships to get the job done
- MAPP allowed for better collection of local data using nationally recognized tools



8/31/2018



Public Health
Prevent. Promote. Protect.

**Boone County
Health Department**

Comp Plan Basics

- Typical Sections
 - Existing Conditions
 - Current Zoning
 - Existing Land Use
 - Demographics/Market
 - Current Transportation
 - Existing Community Facilities/Infrastructure
 - Culture/Image
- The 2017/2018 Boone County Comp Plan
 - Livability and Recreation
 - Environmental Sustainability
 - Health, Wellness and Safety
 - Education and Public Communication
 - Economic Development
 - Housing
 - Transportation
 - Land Use



8/31/2018



Public Health
Prevent. Promote. Protect.

**Boone County
Health Department**

Comprehensive Planning in Boone County

Seven Comprehensive or Land Use based plans have been developed for Boone County prior to 2018

- 1966 – Belvidere and Boone County Comprehensive Plan
- 1974 – Land Use Plan – Belvidere and Boone County, Illinois
- 1981 – Land Use Plan Belvidere/Boone County
- 1991 – The Comprehensive Plan for Belvidere-Boone County, Illinois
- 1997 – West Hills Neighborhood Land Use Plan
- 1999 – Boone County Comprehensive Plan
- 2006 – Flora Neighborhood Land Use Plan



8/31/2018



Public Health
Prevent. Promote. Protect.

**Boone County
Health Department**

The Previous Comprehensive Plan

- The most recent full rewrite of the Boone County Comprehensive Plan was in 1999 at the height of the county's population boom
- The County was feeling the pressure of continuous development
- Officials hired a Wisconsin firm to develop the county-wide comprehensive plan
- This document included both incorporated and unincorporated areas of the county, and was heavily focused on land use practices
- It proved to be a significant and influential plan that helped guide and shape development practices county-wide
- The plan's original time horizon was 20 years, and was nearing the end of its lifespan



8/31/2018



Public Health
Prevent. Promote. Protect.

**Boone County
Health Department**

12

The Boone County Comp Plan 2017-18

- The '99 comp plan was based on continuous growth and did not factor in the recession or the housing bubble
- Using a land use map and guided vision from a different time does not steer us in the best direction because so much had happened in that time period
- Boone County and R1 Planning began discussing a full rewrite of the Comprehensive Plan in May 2017
- Our Goal: *Implementation and Public Input*
- Written with a Health in all Policies lens



8/31/2018



Public Health
Prevent. Promote. Protect.

**Boone County
Health Department**

13

MAPP/IPLAN and Comprehensive Plan Collaboration

- **MAPP's Purpose:** Help communities prioritize public health issues, identify resources for addressing them, and take action
- **CP's Purpose:** To develop an easy-to-use, implementable roadmap for the future of Boone County, driven by the community's needs, vision, and values
- Both plans are being done simultaneously in order to:
 - Share limited resources
 - Collaborate
 - Crosswalk the two plans



8/31/2018



Public Health
Prevent. Promote. Protect.

**Boone County
Health Department**

14

This merger happened by accident

- Boone County does not have an inpatient hospital making a CHA/CHIP/CHNA less feasible
- Coincidence that IPLAN came due at the same time as the County Board adopted a resolution to update/rewrite the County Comprehensive Plan
- County Planner and Health Department Administrator ended up at a county department heads meeting talking about their own versions of strategic planning (unintentionally perpetuating government silos)

**No one told us to do this but
no one stopped us either.....**



8/31/2018



Public Health
Prevent. Promote. Protect.

**Boone County
Health Department**

15

We looked for a model....

- Of County CP merged with IPLANs in Illinois and in the field and didn't come across anything
- So we are creating a pilot of a new model that may help inform other counties to have a more collaborative relationship between their health and planning departments



8/31/2018



Public Health
Prevent. Promote. Protect.

**Boone County
Health Department**

16

Our timing was perfect!

- Coincided with a stronger push for collaboration in the fields of Public Health and Planning
 - Partnering across multiple sectors and leveraging data and resources to address social, environmental, and economic conditions that affect health and health equity
 - To solve the fundamental challenges of population health, we must address the full range of factors that influence a person's overall health and well-being and a health department cannot do this alone



8/31/2018



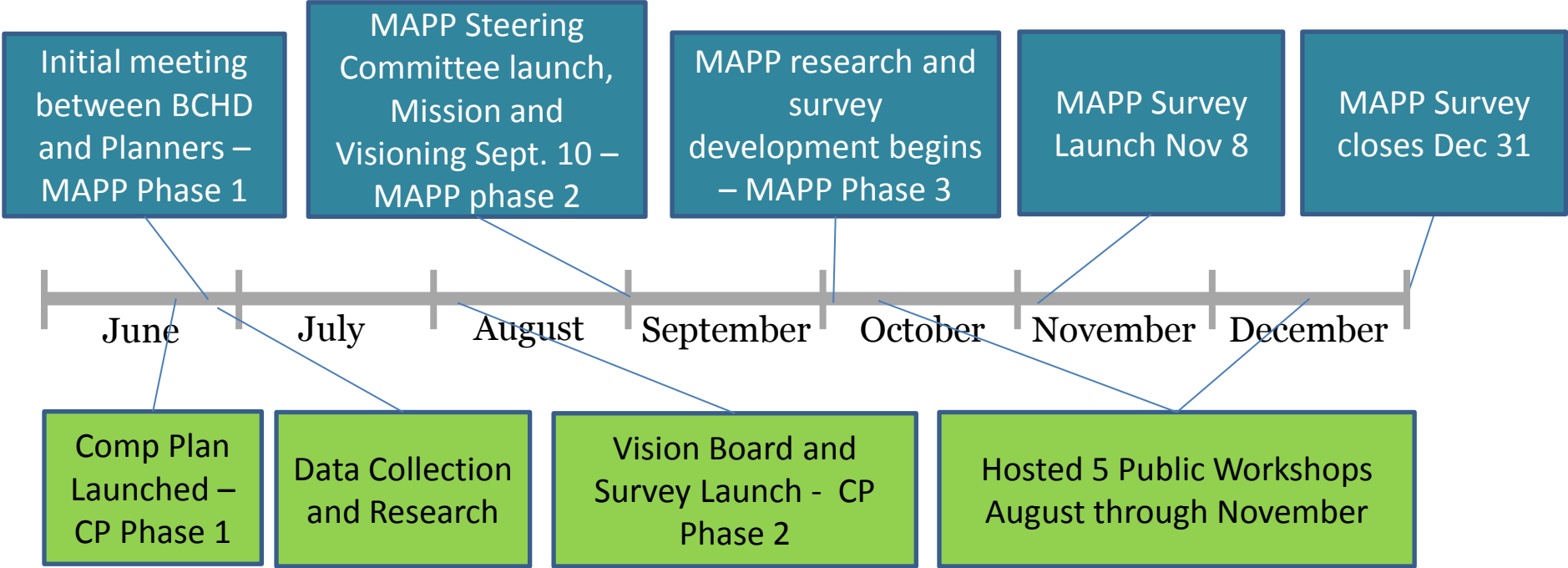
Public Health
Prevent. Promote. Protect.

**Boone County
Health Department**

17

Process Time-Lines 2017

Boone County Health Department Planning Process

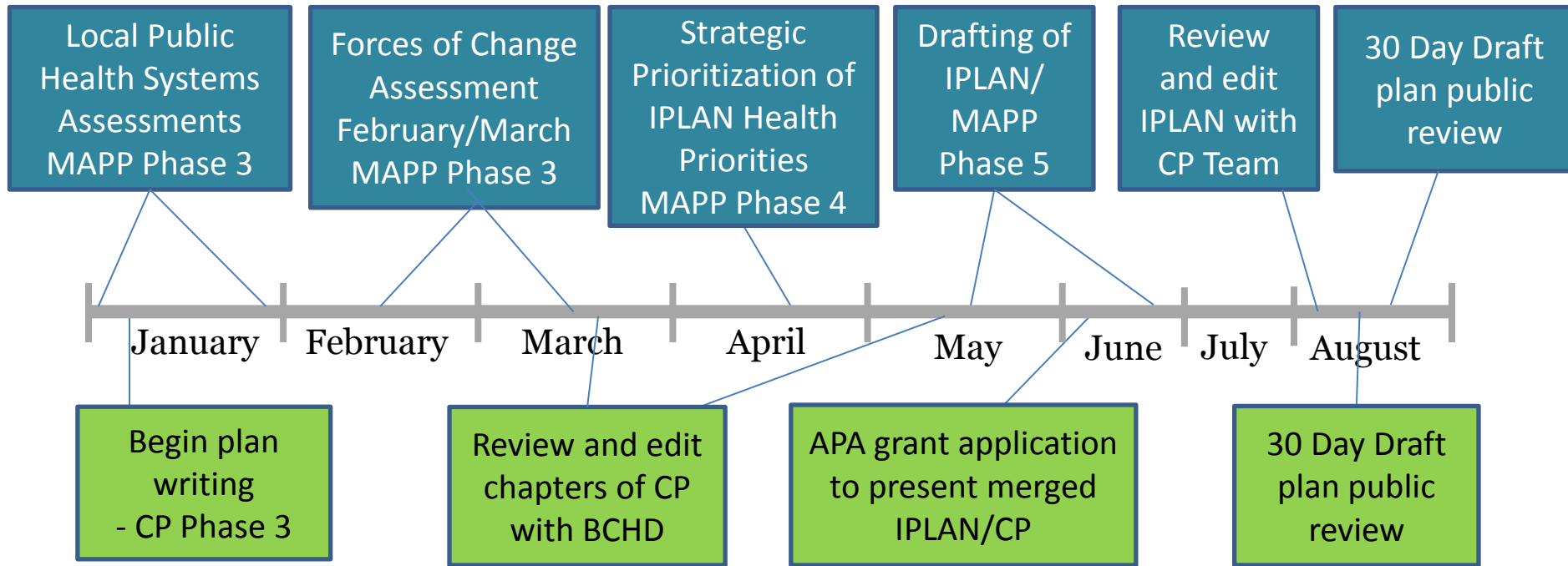


Comprehensive Planning Process



Process Time-Lines 2018

Boone County Health Department Planning Process



8/31/2018

Comprehensive Planning Process

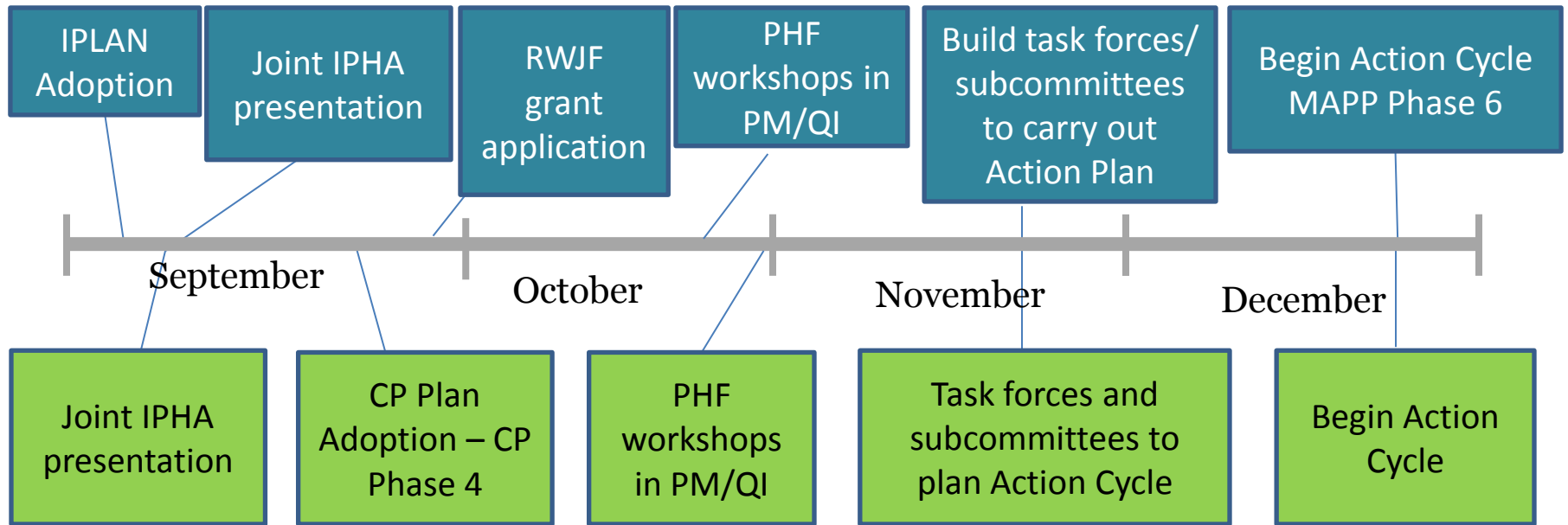


Public Health
Prevent. Promote. Protect.

**Boone County
Health Department**

Process Time-Lines Plan Viewing Adoption Processes

Boone County Health Department Planning Process



Comprehensive Planning Process



8/31/2018



Public Health
Prevent. Promote. Protect.

**Boone County
Health Department**

Collaboration

- CP collected data and shared it with BCHD (including the CP sharing of GIS maps and BCHD providing CP with previous survey data sets)
- Combined stakeholder lists
- Coordinate branding strategy
- BCHD provided Spanish language translations and interpreters
- BCHD hosted CP vision boards and vision survey
- CP shared Health and Wellness workshop results with BCHD
- CP helped distribute BCHD surveys
- BCHD attended CP public workshops and CP attended BCHD Steering Committee meetings and MAPP forums
- BCHD staff acted as CP facilitators and CP staff acted as MAPP facilitators
- Joint CP/IPLAN presentations and briefings at workshops and board meetings
- Shared meeting, workshop, and survey results
 - Help organize, write, and proofread each plan to check for consistency



Public Health
Prevent. Promote. Protect.

**Boone County
Health Department**

Lessons Learned

- Begin your partnership efforts NOW
- Start educating your boards, councils, government agencies early
- Teach planners to be public health professionals and public health professionals to be planners by helping them realize the interdependency
- Be willing to push forward while not stepping on toes
- Work to educate the public on the scope of public health
- Stay two steps ahead
- Prepare for accommodations that will need to be made due to staffing changes



8/31/2018



Public Health
Prevent. Promote. Protect.

**Boone County
Health Department**

Future Steps

- Grant searching
- TA for Boone County
- Keeping both plans off the shelves and in the hands of decision makers
- Solidifying a replicable model
- Speaking to our peers in the public health and planning fields to encourage similar partnerships in other jurisdictions



8/31/2018



Public Health
Prevent. Promote. Protect.

**Boone County
Health Department**

23

Resources

- Public Health 3.0: <https://www.healthypeople.gov/sites/default/files/Public-Health-3.0-White-Paper.pdf>
- Public Health Institute Health in all Policies: <http://www.phi.org/resources/?resource=hiapguide>
- American Planning Association/Health in all Policies Toolkit: <https://www.planning.org/publications/document/9148386>
- American Planning Association/Healthy Community Planning: Methods and Tools/Health Impact Assessments: <https://www.planning.org/events/course/9126338>
- Healthy Community Planning: Connecting Public Health & Environmental Health with Urban Planning. https://www.ihconline.org/media/cms/Mary_Rose_Corrigan_final.pdf
- The **BUILD** challenge. <https://buildhealthchallenge.org/>
- The Build Health Challenge: DATA SHARING WITHIN CROSS-SECTOR COLLABORATIONS: Challenges and Opportunities, JULY 2018 <https://mailchi.mp/messagepartnerspr/new-report-data-sharing-within-cross-sector-collaborationschallenges-and-opportunities?e=1a0c8edcoe>



8/31/2018



Public Health
Prevent. Promote. Protect.

Boone County
Health Department

Thank you!

Amanda C. Mehl, RN, MPH
Public Health Administrator
Boone County Health Department
1204 Logan Ave.
Belvidere, IL 61008
815-547-8591
amehl@boonehealth.org

Hilary Rottmann, Planner II
City of Beloit
100 State Street
Beloit, WI 53511
Office: (608) 364-6708
Fax: (608) 364-6609
rottmanh@beloitwi.gov
hilaryrottmann@gmail.com

Lynden Schuyler, MBA, MPH
Boone County Health Department
1204 Logan Ave.
Belvidere, IL 61008
815-547-8388
lynden.schuyler@vanderbilt.edu



8/31/2018



Public Health
Prevent. Promote. Protect.

**Boone County
Health Department**

25